



HAMILTON LODGE  
SCHOOL AND COLLEGE

All policies are developed collaboratively to ensure we fulfil our mission to teach each one of our Primary, Secondary pupils and Further Education students to:

- develop a full language to support memory & learning
- achieve their academic and vocational potential
- be safe and confident in the modern world
- have happy memories of their childhood and make lasting friendships
- be healthy and resilient both physically and emotionally

## 23 CP: Behaviour Principles.

Compulsory Policy.



HLSC Specific Policy.

**Date Approved:**

**10 March 2020**

Chair of Governors:

Martin Redshaw.

Principal:

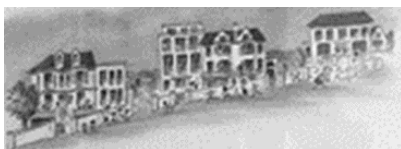
Billy Mc Inally.

Policy Lead:

Principal.

**Expiry Date:**

**10 March 2022**



Hamilton Lodge School and College Policy Document.

## Behaviour principles.

At Hamilton Lodge school and college we are committed to [Positive Behaviour Support](#) as this allows us to offer appropriate, non-restrictive interventions to support individuals engage with their learning and make progress commensurate with their differing abilities.

Staff will model the behaviours we wish to see in our learners and will work with them, their families and other relevant external partners to develop strategies that will help our learners to react in an adaptive manner to any trigger, external or internal that results in a crisis.

We will work to ensure all learners:

- feel safe, valued and respected, and learn free from the disruption of others
- are free from any form of discrimination
- have access to rewards and if appropriate sanctions in line with the behaviour policy
- understand their rights and responsibilities in school, college and residential houses
- are supported to make sensible choices and take responsibility for their actions.

We will work with families:

- to ensure they are aware of the approaches we take to support their children
- to ensure high quality communication exists between school and home at all times.